



# **CENTLEC (SOC) LTD**

---

**IDP and Sector Plans 2019/20/21 Financial Year**

**TABLE OF CONTENTS**

**Contents**

**1. INTRODUCTION ..... 4**

**2. IDP PROJECTS ..... 5**

    2.1 ELECTRIFICATION PROJECTS..... 5

        2.1.1 *Electrification projects for 2018/19 Financial Year* ..... 5

        2.1.2 *Electrification projects for 2019/20 Financial Year* ..... 6

        2.1.3 *Electrification projects for 2020/21 Financial Year* ..... 7

    2.2 PUBLIC LIGHTING PROJECTS..... 8

        1.2 *Area lighting projects for 2018/2019 Financial Year* ..... 10

    2.3 ELECTRICAL INFRASTRUCTURE STRENGTHENING PROJECTS..... 11

**3. SECTOR PLANS ..... 13**

**4. CHALLENGES ..... 15**

**5. CONCLUSION..... 15**

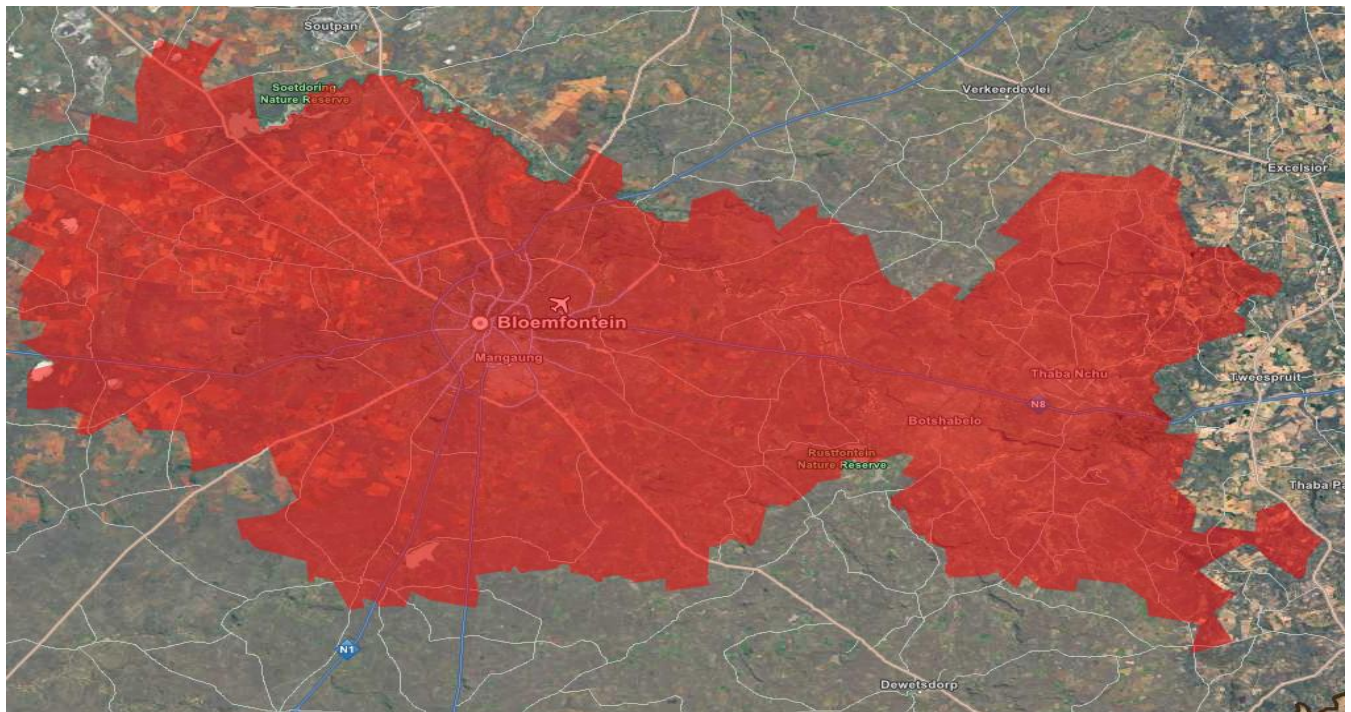
## TABLE OF FIGURES

Table 1: Electrification Projects 18/19 FY .....	6
Table 2:Electrification Projects 19/20FY .....	7
Table 3: Electrification projects 20/21 FY.....	7
Table 4: Public Lighting to be installed.....	9
Table 5: Network Strengthening Projects 2019/20/21 .....	12
Table 6: Projects to cater for Future Load .....	14

## 1. INTRODUCTION

CENTLEC (SOC) Ltd, an electricity utility, is solely owned by Mangaung Metropolitan Municipality (MMM). The Botshabelo, Bloemfontein, former Naledi, Soutpan and Thaba Nchu municipalities falls within the boundaries of MMM. CENTLEC's mandate is to plan, implement, monitor and evaluate all projects related to electricity to MMM as well as the neighbouring local municipalities. The neighbouring municipalities that CENTLEC serves in terms of the Service Level Agreements established between the parties include: Mantsopa, Kopanong, and Mohokare Local Municipalities.

CENTLEC has entered into a service delivery agreement with Mangaung Metro to ensure compliance, performance, accountability and effective reporting throughout the different processes and programs which the municipality is embarking on.



## **2. IDP PROJECTS**

This section provides information on all identified projects which are mainly informed by community needs in different wards within the municipality. CENTLEC's objective is to achieve all target as set out in the Service Delivery and Budget Implementation Plan (SDBIP) that is approved by the council for 2019/2020 financial year. Also included in the report is the progress of projects identified for 2020/2021 financial year. Lastly it provides proposed projects for 2019/2020 financial year.

### **2.1 ELECTRIFICATION PROJECTS**

The table below outlines the electrification projects carried out by CENTLEC in this current financial year, 2018/2019. The projects are aimed at improving the lifestyle of the Mangaung Metro community by providing households with electricity; and also contributing towards social-economic upliftment by offering employment opportunities to the community of Mangaung Metro.

#### **2.1.1 Electrification projects for 2018/19 Financial Year**

A target of 997 was set for electrification project, and below is the progress to date:

Table 1: Electrification Projects 18/19 Project Name	Number of connections in 18/19FY	Ward	Estimated Project Cost	Project Progress
Electrification of Khayelitsha	500	17	R 7 746 500	420 House connections have been completed
Electrification of Matlharantlheng	497	46	R 7 703 500	91 House connections have been completed
Electrification project in Freedom Square Extension	24	6	R 396 000	The project is 100% completed, with 24 house connections been energized.
Electrification project in Phase 9	33	45	R 544 500	Digging and planting of poles activity is 100% complete.
Electrification project in Thembaletu	54	11	R 891 000	Designs have been completed.
Electrification project in Turflaagte	24	11	R 396 000	The project is 100% completed, with 24 house connections been energized.
Electrification project in Thabo Mbeki Square	23	6	R 379 500	The designs are completed.
Electrification project in Hillside View	600	10	R 9 900 000	The project is under construction. 343 house connections are ready to be connected.

### 2.1.2 Electrification projects for 2019/20 Financial Year

A target of 1600 is set for electrification project in the next financial year which is prone to change as per the community needs, and below is the identified projects:

Project Name	Stands to be connected in 19/20FY	Ward	Estimated Project Cost
Electrification Project in Grassland Phase 6 (Khayelitsha)	150	17	R 2 475 000

Electrification Project in Hillside View Phase 1	450	10	R 7 425 000
Electrification Project in Matlharantlheng Phase 3	500	46	R 8 250 000
Electrification Project in Rodenbeck	500	46	R 8 250 000

**Table 2: Electrification Projects 19/20FY****2.1.3 Electrification projects for 2020/21 Financial Year**

A target of 1600 is set for electrification project in the next financial year which is prone to change as per the community needs, and below is the identified projects:

Project Name	Stands to be connected in 19/20FY	Ward	Estimated Project Cost
Electrification Project in Botshabelo Section R	400	37	R 7 000 000
Electrification Project in Hillside View Phase 2	150	10	R 2 625 000
Electrification Project in Matlharantlheng Phase 4	500	46	R 8 750 000

**Table 3: Electrification projects 20/21 FY**

## 2.2 PUBLIC LIGHTING PROJECTS

Mangaung Metro has undertaken implementation of projects of installing area and street lighting in order to assist in promoting a safe and secure environment within its boundaries. Installation of area and street lighting is limited to the request from the councilors through IDP and the allocated budget

### 1.1 Areas without Public Lighting

Area	Location	Number of Masts to be installed
Bloemfontein	Grassland (Khayelitsha)	15
Bloemfontein	Matlharantlheng (Naledi) Phase 1	18
Bloemfontein	Thembaletu Square	4
Bloemfontein	Freedom Square Extension.	6
Bloemfontein	Silver city	5
Bloemfontein	Namibia	2
Bloemfontein	Heidedal	2
Bloemfontein	Caleb Motshabi	15
Bloemfontein	Phase 2	2
Bloemfontein	Rockland	2
Botshabelo	Section A	3
Botshabelo	Section K	4
Botshabelo	Section H-3	5
Botshabelo	Section G	3



Area	Location	Number of Masts to be installed
Botshabelo	Section R	20
Thaba Nchu	Selosesha 7	2
Thaba Nchu	Unit 1	2
Thaba Nchu	Sediba	6
Thaba Nchu	Zone 1 extension	2
Thaba Nchu	Gladstone	6
Dewetsdorp	Morajaneng	7
Wepener	Ramabiletsa	9
Thaba Nchu	Morago	4
Thaba Nchu	Moroto	4
Thaba Nchu	Sediba	4
Thaba Nchu	Paradys	4
Thaba Nchu	Ratabane	4
Thaba Nchu	Rietfontein	4
Thaba Nchu	Balaclava	4

Table 4: Public Lighting to be installed



1.2 Area lighting projects for 2018/2019 Financial Year

### 2.3 ELECTRICAL INFRASTRUCTURE STRENGTHENING PROJECTS

One of CENTLEC's mission is to provide optimal service delivery as mandated by the Mangaung Metropolitan Council therefore at all times CENTLEC has to monitor load growth and ensure that the entire electrical infrastructure would be able to supply or be upgraded in time to accommodate the anticipated loads. Table below is a list of identified projects for the purpose of electrical network strengthening:

Name of the project	Description	Ward	Estimated Cost	2019/2020 Budget	Status
Fichardt Park Distribution Centre	Installation of primary feeders and switchgear to all existing and identified future primary substations	23,24,25, 26	R34,819,786.82	R2,800 000.00	Installation of 11kV cables to primary substation switchgears.
Cecilia Distribution Centre	Installation of primary feeders and switchgear to all existing and identified future primary substations	22,26,48	R56,660,877.01	R10,000 000.00	Installation of 11kV cables to primary substation switchgears. Relocate or replace existing protection devices
Elite Distribution Centre	Installation of primary feeders and switchgear	17	R86,483,728.72	R11,000 000.00	Installation of 11kV primary line feeders to primary nodes and relocate or replace existing overhead line protection devices.
Fichardt Distribution Centre	Installation of primary feeders and switchgear to all existing and identified future primary substations	23,24,25, 26	R34,819,786.82	R2,800 000.00	Installation of 11kV cables to primary substation switchgears.
Coal Yard DC	Establishment of a 132/11kV DC to enhance the fully loaded 11kV distribution networks in the old power station to supply the eastern CBD, Batho, Eastend industrial area and Oranjesig commercial area.		R58,000,000	R15,000,000	Replacement of the existing decrepit (last two of five) 33/11kV coupling transformers and out dated 11kV switchgear with two 30MVA transformers and 33kV switchgears.

132kV Line 3 & 4 - Northern Ring from Harvard	Construction of 132kV Overhead line from Harvard to Bayswater Distribution Centres	26,48,44,17	R151 000 000	R22,000 000	Overhead line for Phase 2 up to the proposed Outspan(Limosine )DC
Maphikela 132kV central line, switching station and future 132/11kV DC  On five year budget	Phase 1: Establishment of a 132kV switching station and the extending of the 132kV 180 MVA power line from Fichardt Park DC, to Maphikela site to strengthen our 132kV bulk supply infrastructure to the east of Bloemfontein  Phase 2: The establishment of a complete 132/11 kV - 20MVA firm capacity distribution centre and associated primary feeders and switchgear	1, 2, 3, 4, 5, 19	R 32 000 000  R81,000,000	R200 000  R16,900,000	RFP was submitted for approval.. Application and motivation for funding from DOE was compiled and submitted for approval.  Placed on five year budget plan To deload very long primary feeders form Hamilton and Mangaung DC to create more operational capacity and to restore voltage regulation issues -
Turflaagte DC	Establishment of new Turflaagte DC with 20MVA 132/11kV firm capacity to deload the Chris Hani Switching station networks from Andries feeder and to accommodate the new electrification projects in Bloemside 7	1, 2, 3, 4, 5, 19	R 90 700 000	R6,243,400	RFP was submitted for approval.. Application and motivation for funding from DOE was compiled and submitted for approval.
Botshabelo Distribution Centre F	Installation of primary feeders and switchgear	27,28,41		R10, 000 000	Installation of 11kV primary line feeders to primary nodes and relocate or replace existing overhead line protection devices.
Botshabelo Distribution Centre -Block E	Establishment of new Sub E DC with 20MVA 33/11kV firm capacity to deload the long 11kV networks supplied from Block B and Block T networks.	27,28,41		R10, 000 000	RFP was submitted for approval.. Application and motivation for funding from DOE was compiled and submitted for approval.

Table 5: Network Strengthening Projects 2019/20/21

### 3. SECTOR PLANS

Energy plays a pivotal role in the lives of the communities of Mangaung Metro and it is therefore imperative for CENTLEC to ensure that plans are kept alive to the enhancement of socio-economic activities. Master plan (MP) is developed and maintained to ensure that effective planning and sound financial management of public finance are achieved. This tool also ensure that strategies of the municipality are kept alive and realized in the main. Network development plans (NDP) are updated every year in line with the latest approved energy sector plans (Developed by CENTLEC), reprioritized and approved IDP program for Mangaung Metro.

Table below projects all identified projects to cater for the existing and future load. Those that are bolded, are the identified **multiyear** projects to enable the growth of the city on envisaged developments within MMM:

Name of the project	Total Project Cost (Estimate)	Status
Installation of primary feeder lines in Meriteng – to complete project	R 11, 997 199.38	Installation of overhead conductors in progress
Installation of primary cables from Clover DC in Estoire – to complete two projects (Lessing 37 and Mark subs)	R 7, 045 914.98	Installation of cables in progress
Installation of primary cables in Groenvlei – to complete project	R 6, 221 460. 89	Installation of cables in progress
Installation of primary cables from Fichardt park DC to Hodges & Sand du Plessis as well as SAP & Stals sub.	R8, 225 059.23	Project is in design stage
Installation of primary cables and switchgear in Spitskop Area from Cecilia DC – Waterberg and F Ferreira subs/Bain’s Game Lodge.	R13, 160 271.67	Phase 1: Two cables has been installed – The towers Centre & Ohlds Avenue Phase 2: Three cables to the new Gemsbok sub (Itau milling) has been installed and energized. Phase 3 projects: Waterberg feeder & Fan Ferreira Sub - Is in design stage
Northern Line (Outer): Establishment of a new, 180 MVA firm capacity overhead line to strengthen bulk supply in MMM	R128 882 893	Phase 1 to 3 is completed. Cecilia DC energised- Network development plan for EIA has been completed and submitted for the whole route from Cecilia DC to Noordstad DC. Phase 4 – Line From Cecilia DC to Outspan DC in design stage.

---

Elite Distribution Centre: Establishment of 45MVA firm capacity by installing the second transformer and its associated equipment of 132/11 kV	R86,483,728.72	DC have been energised – Two line feeders in Design stage
--	----------------	---

Table 6: Projects to cater for Future Load

**4. CHALLENGES**

1. Theft of critical components of the electrical infrastructure
2. Insufficient funding to support all the energy plans envisaged for the financial year under review

**5. CONCLUSION**

The planning and implementation of basic infrastructure within Mangaung Metro Municipality is critical for sustaining basic standards of living and economic activity. It is imperative that sufficient budget for all identified network strengthening projects be allocated for implementation of the projects.

CENTLEC will at all times deliver on its primary mandate that is to provide the best possible electricity services to households.