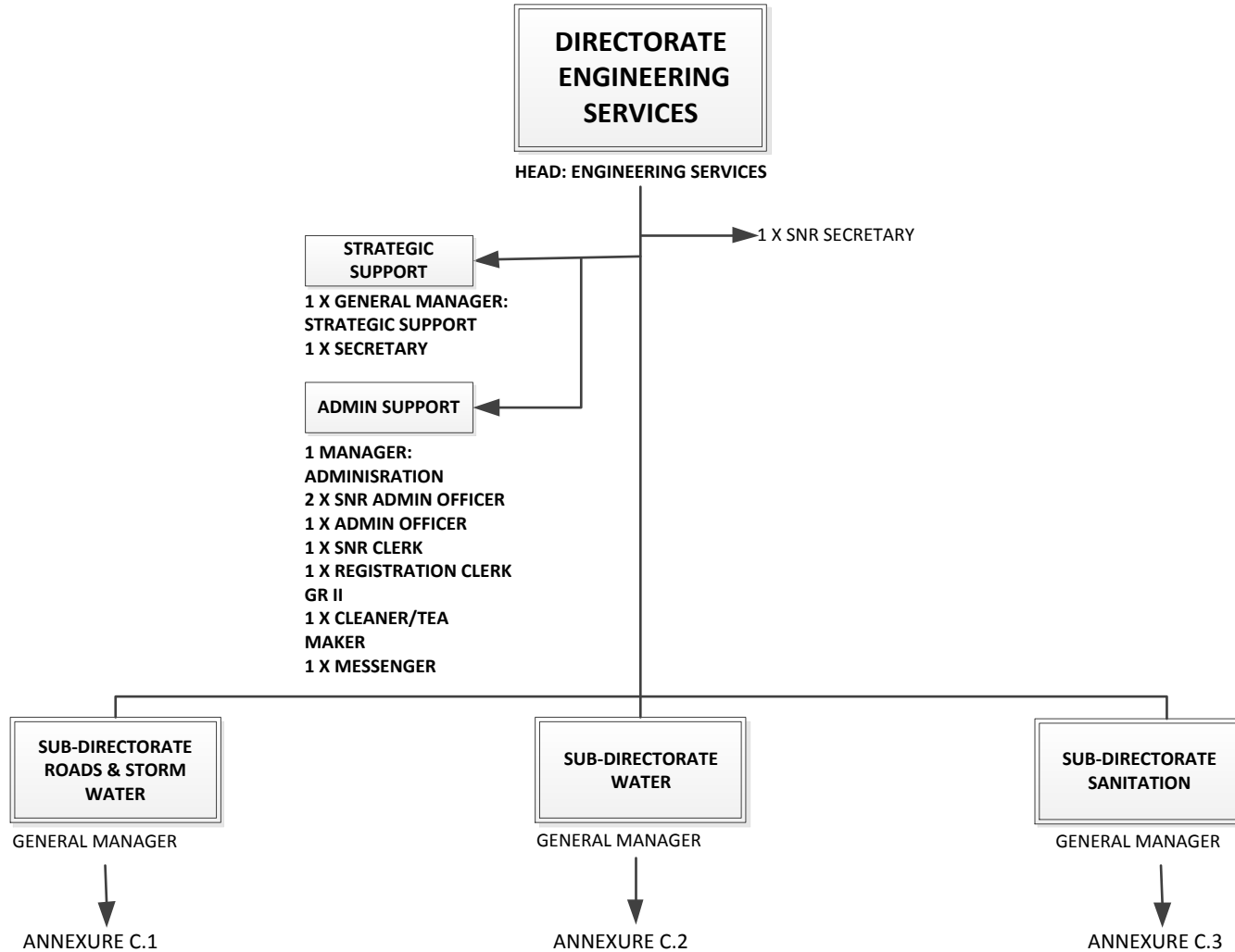
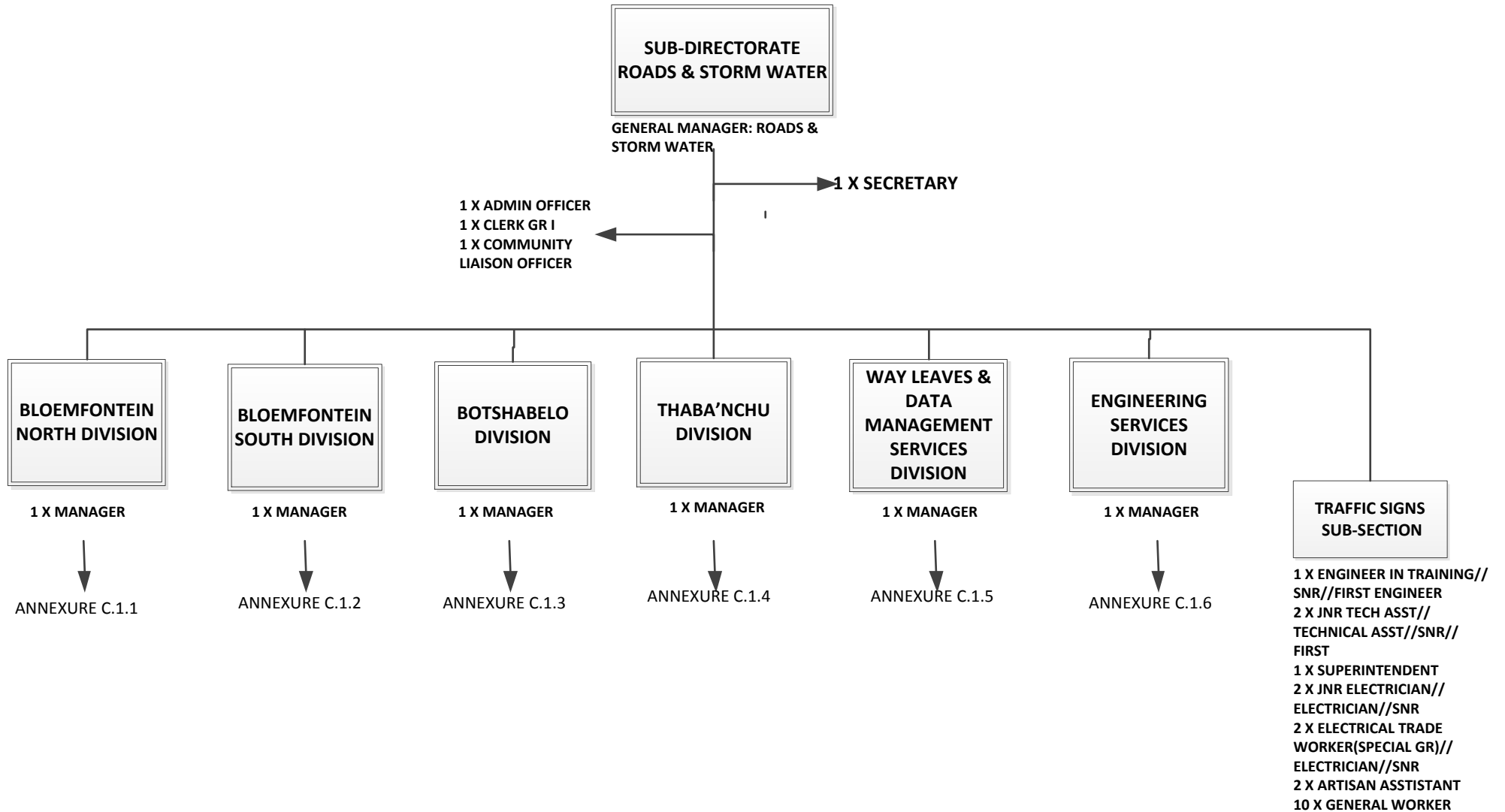


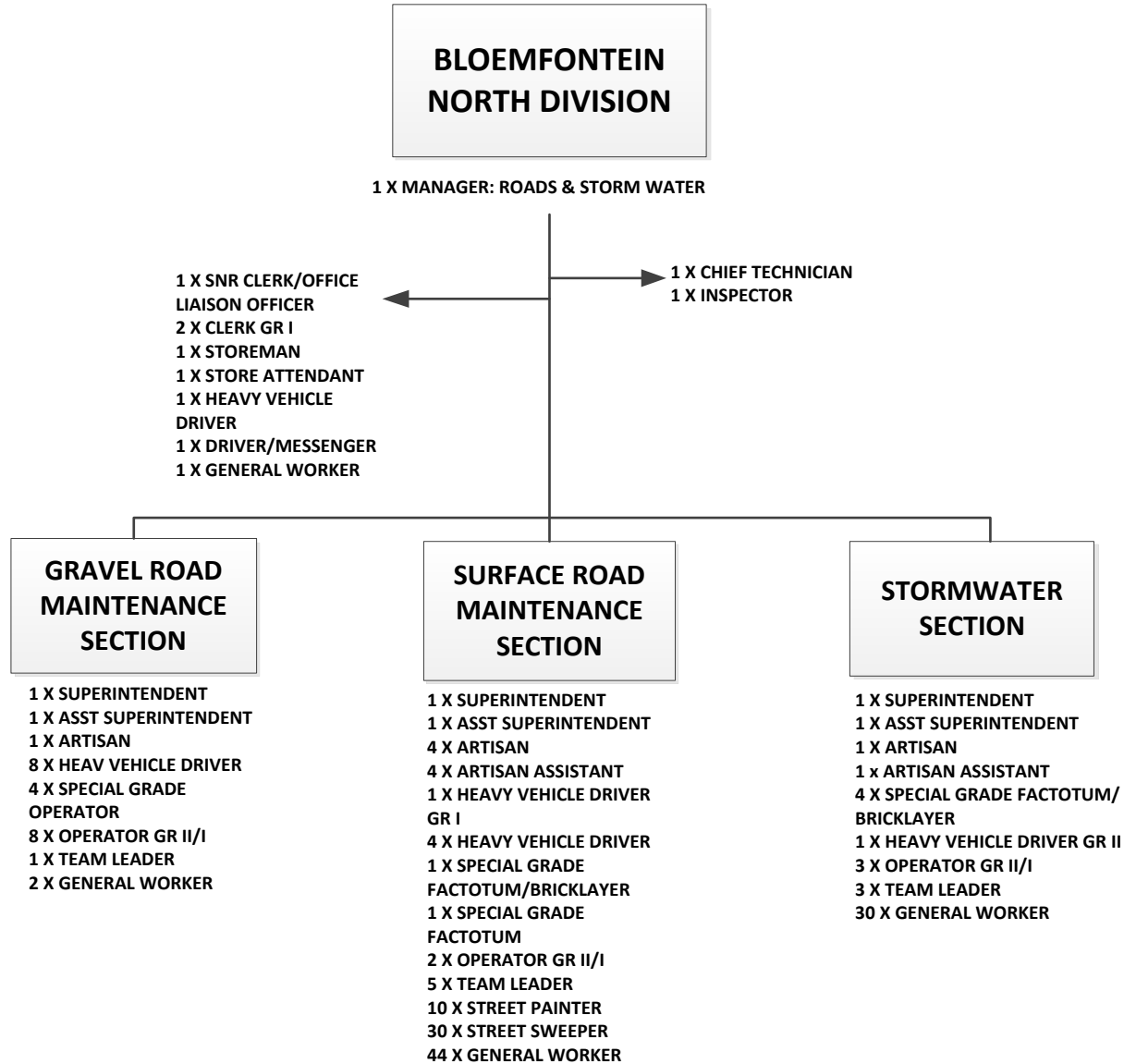
Approved Organisational Structure: DIRECTORATE ENGINEERING SERVICES



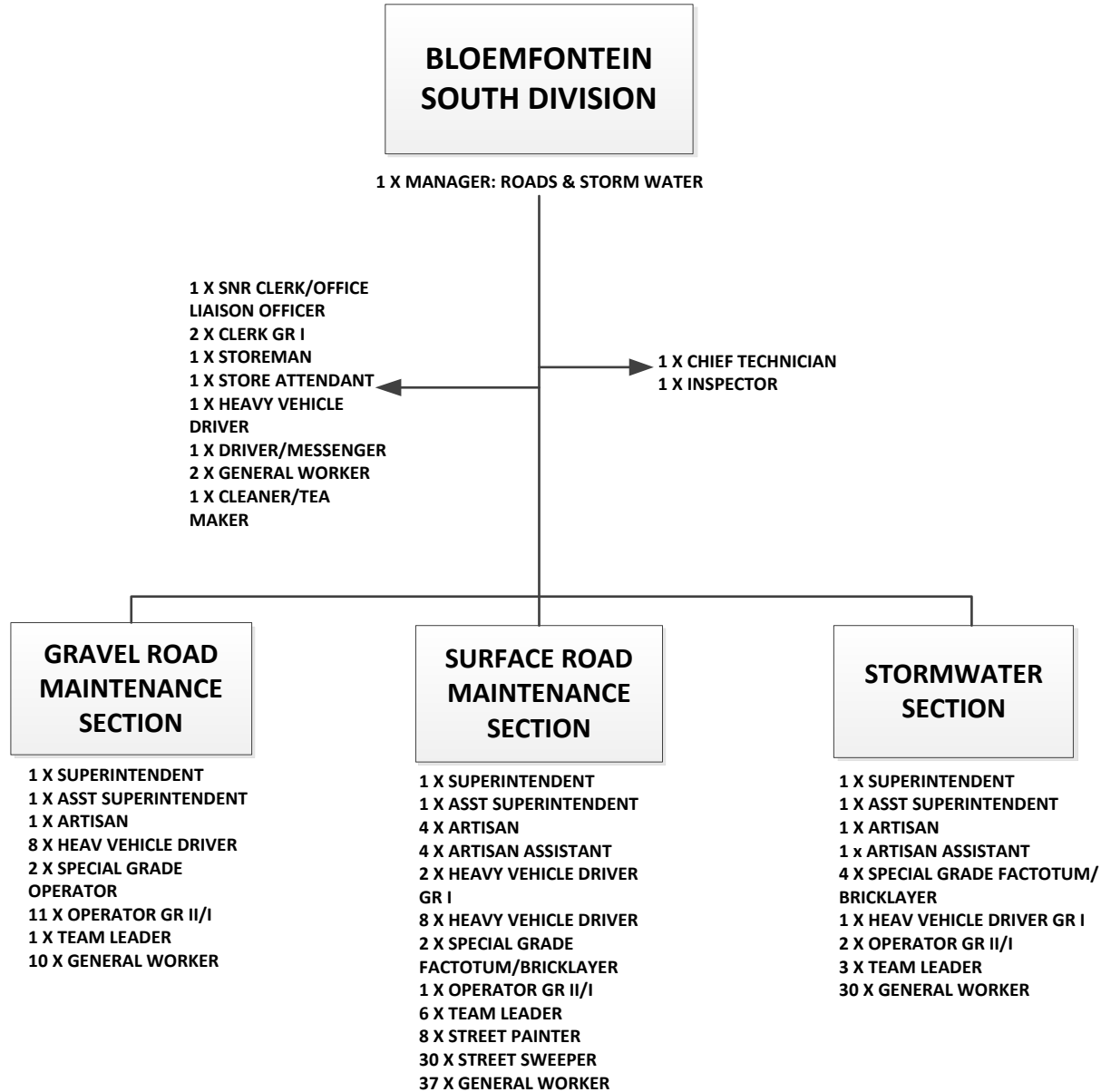
SUB-DIRECTORATE: ROADS AND STORM WATER



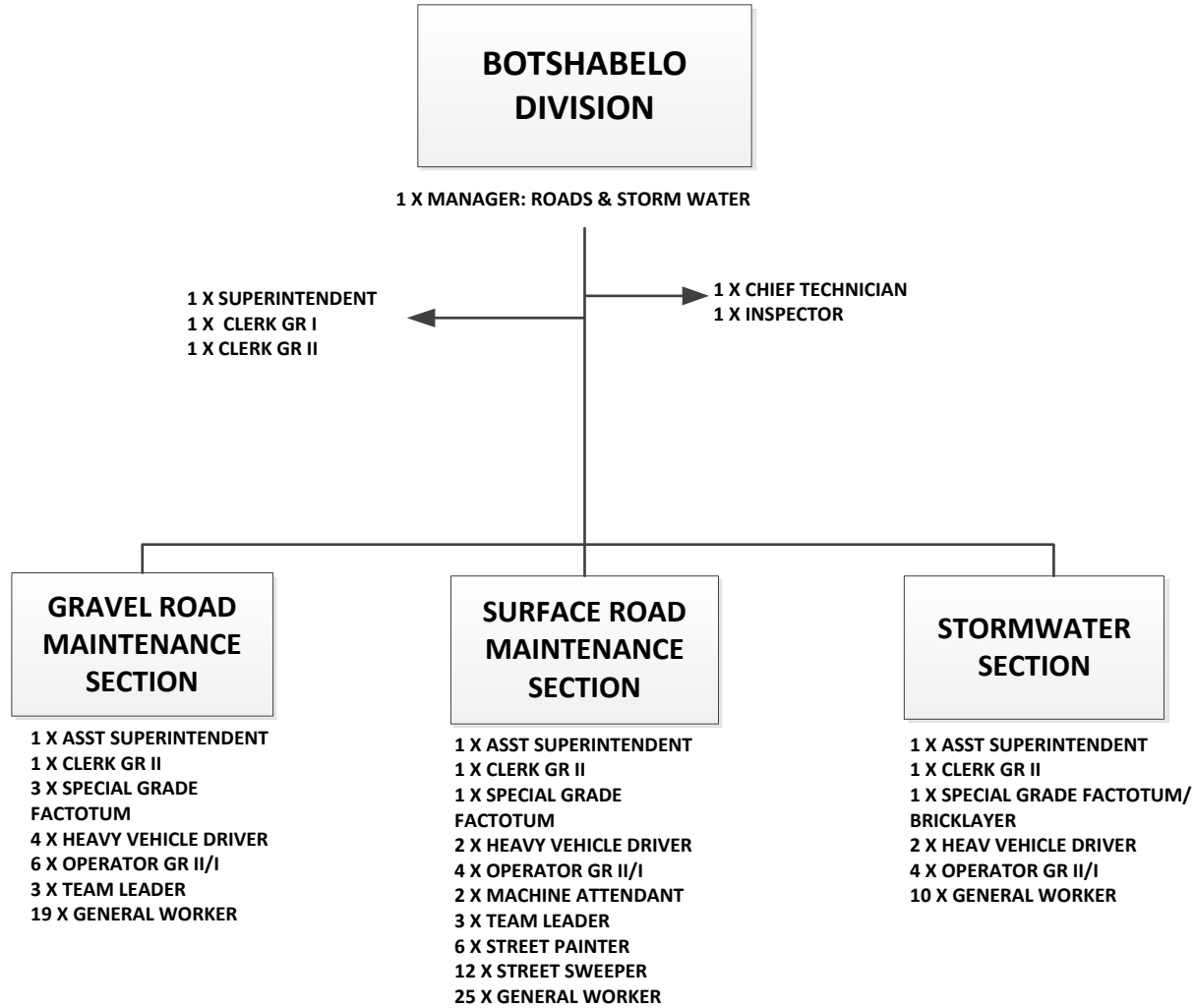
BLOEMFONTEIN NORTH DIVISION



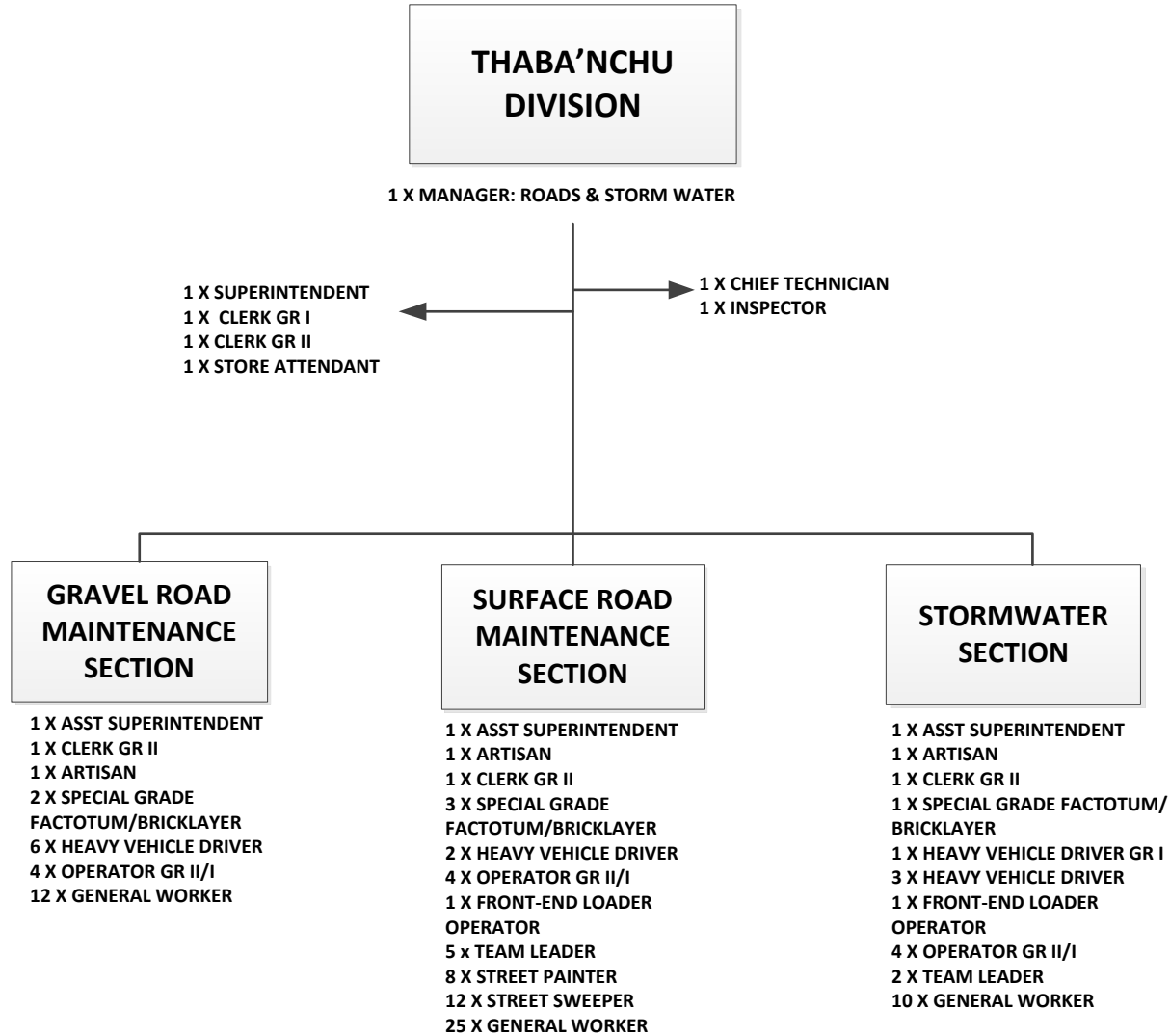
BLOEMFONTEIN SOUTH DIVISION



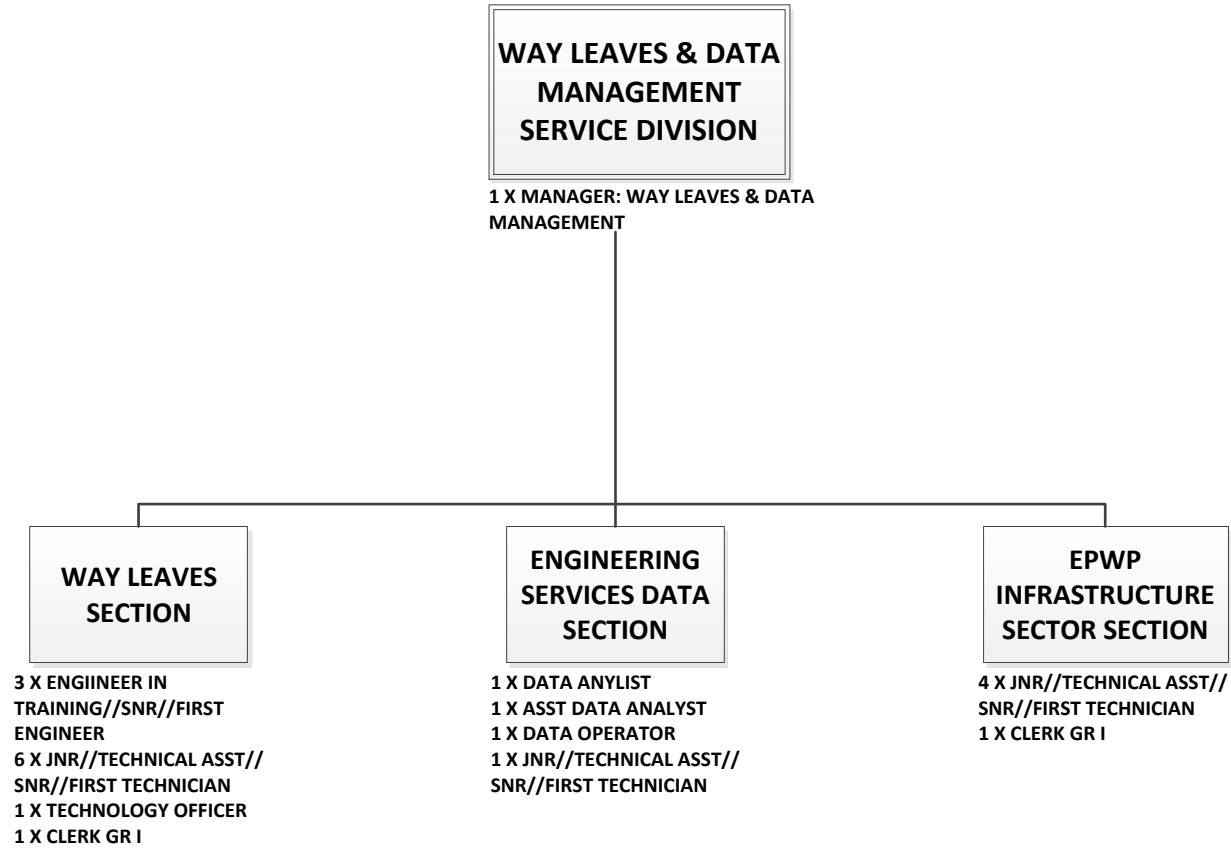
BOTSHABELO DIVISION



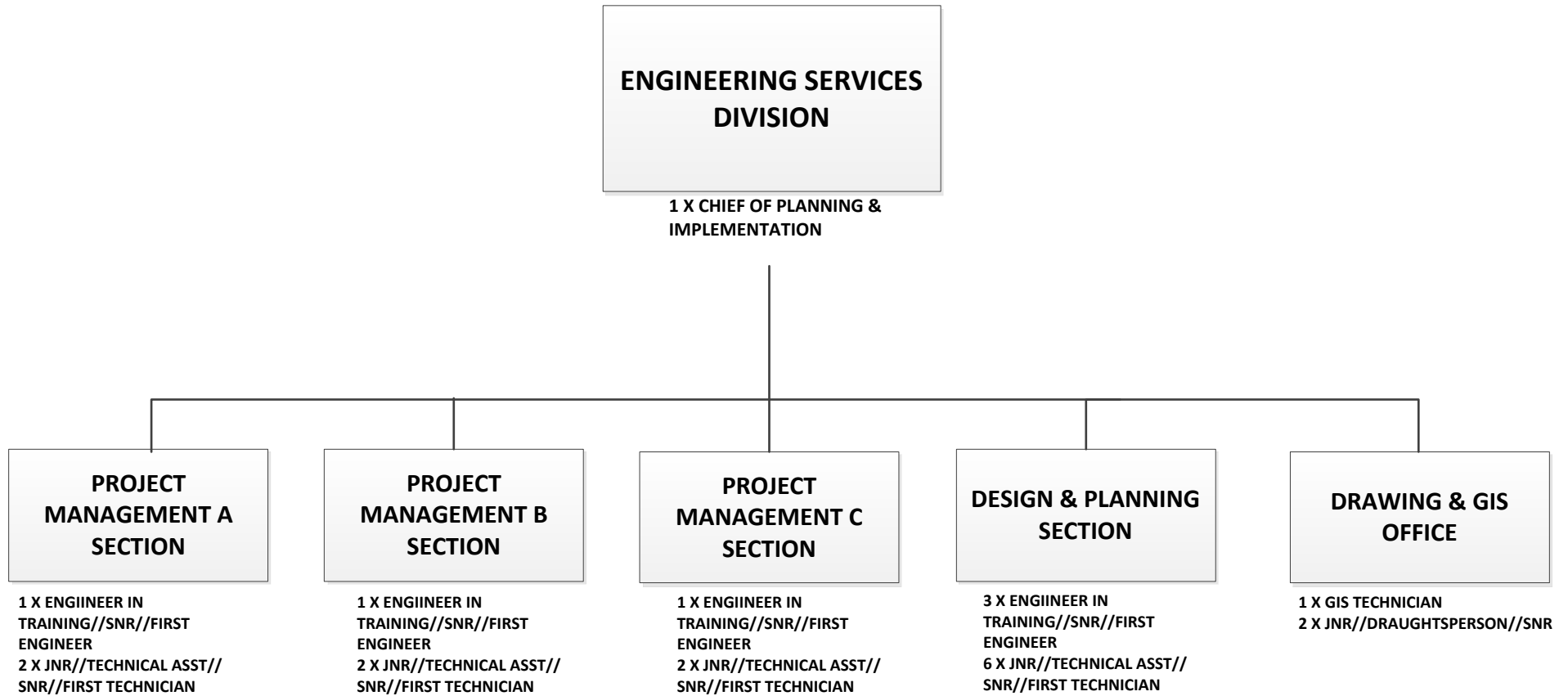
THABA'NCH DIVISION



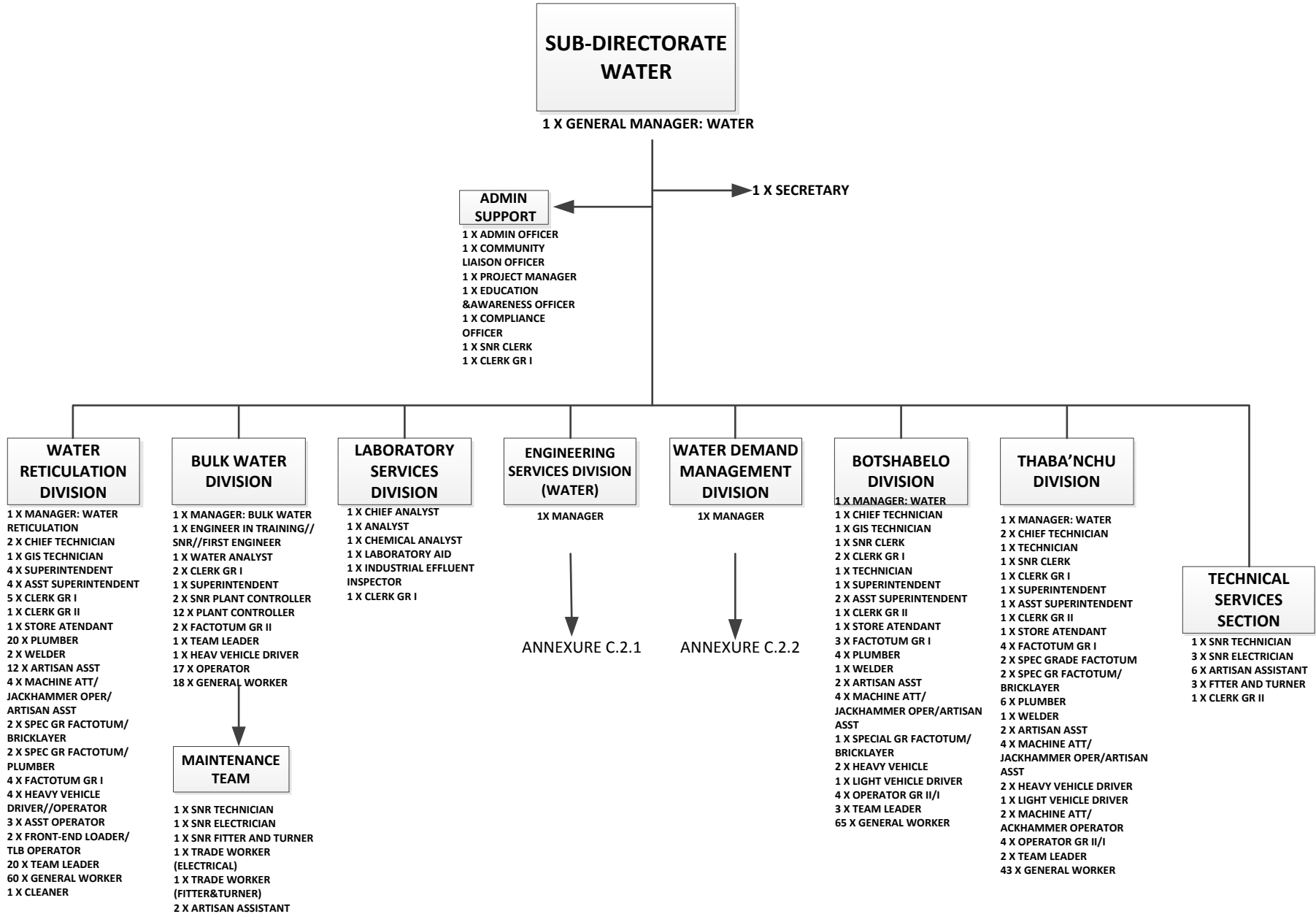
WAY LEAVES & DATA MANAGEMENT SERVICES DIVISION



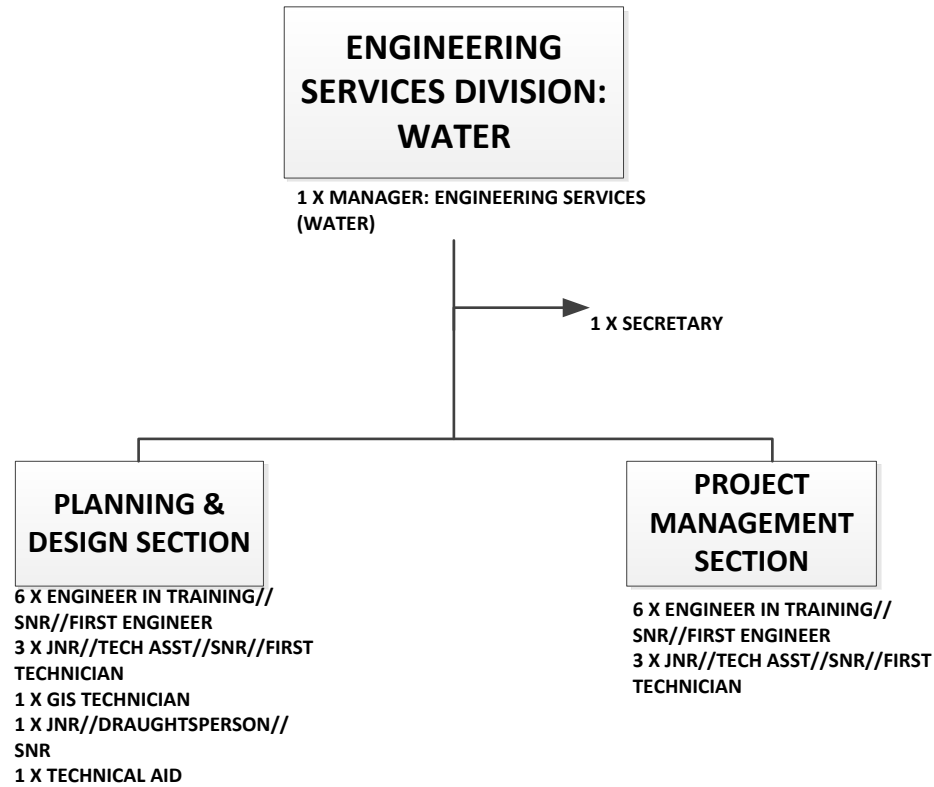
ENGINEERING SERVICES DIVISION



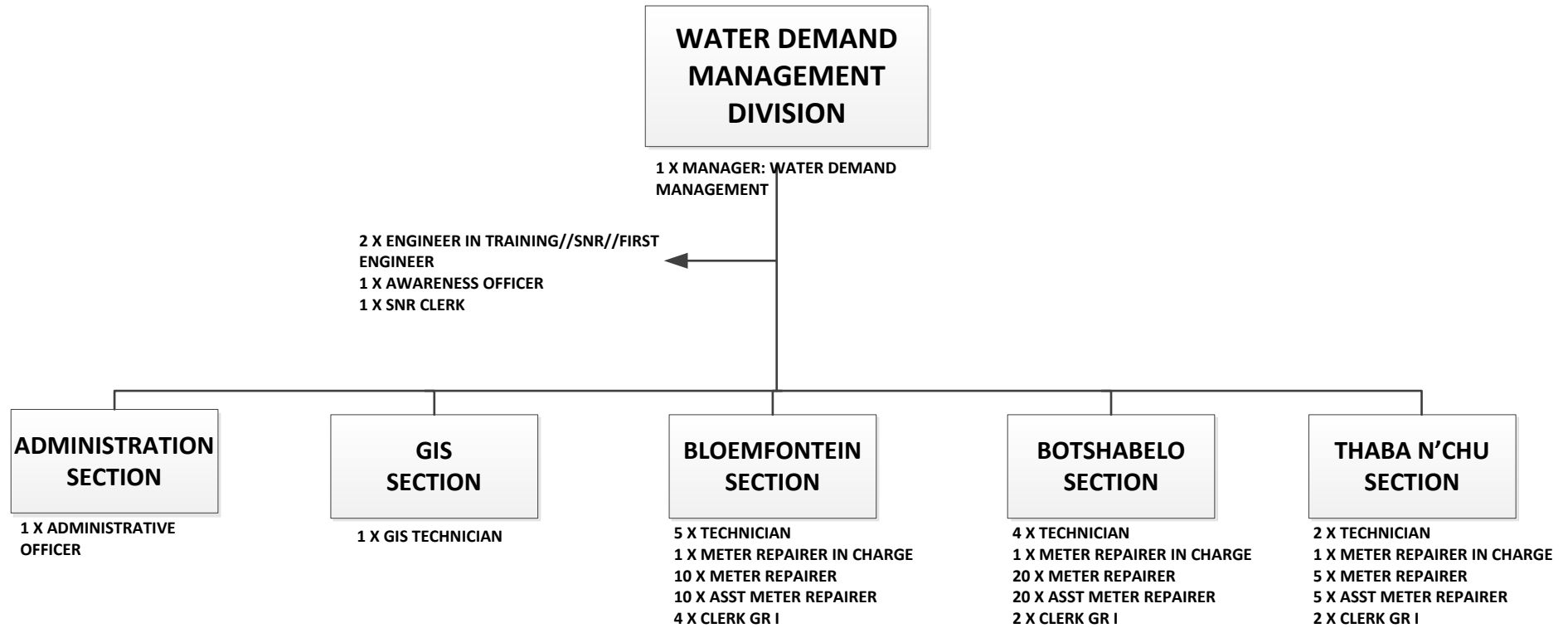
SUB-DIRECTORATE WATER



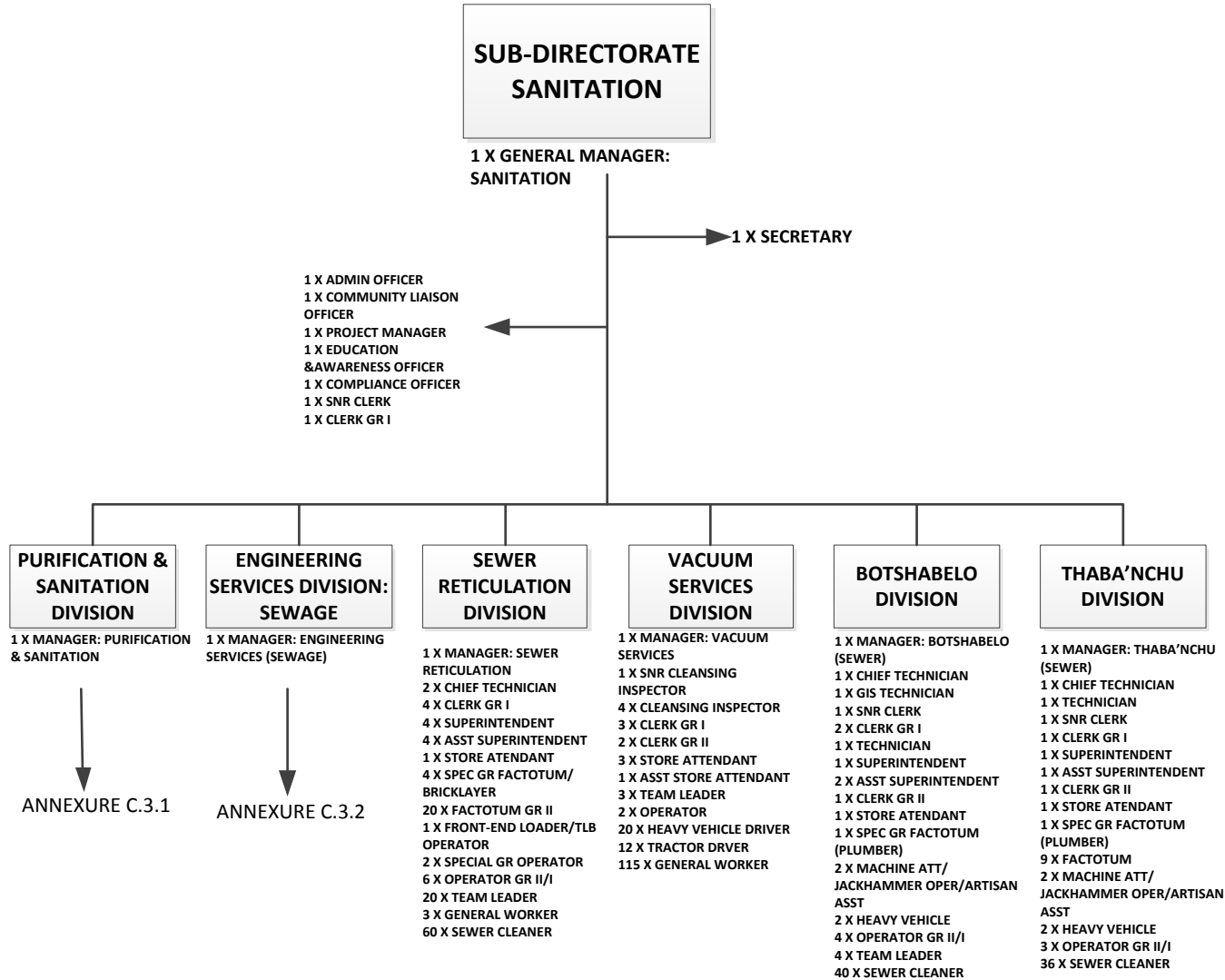
ENGINEERING SERVICES DIVISION: WATER



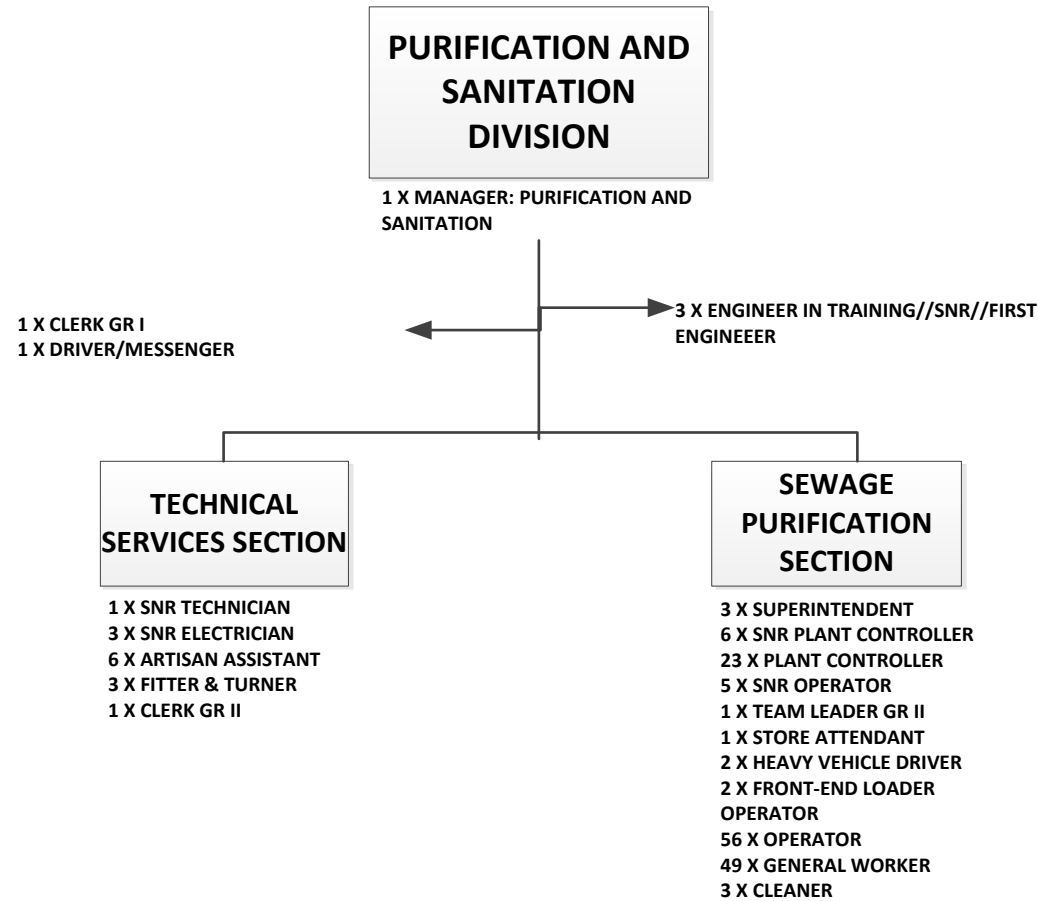
WATER DEMAND MANAGEMENT DIVISION



SUB-DIRECTORATE SANITATION



PURIFICATION AND SANITATION DIVISION



ENGINEERING SERVICES DIVISION: SEWAGE

